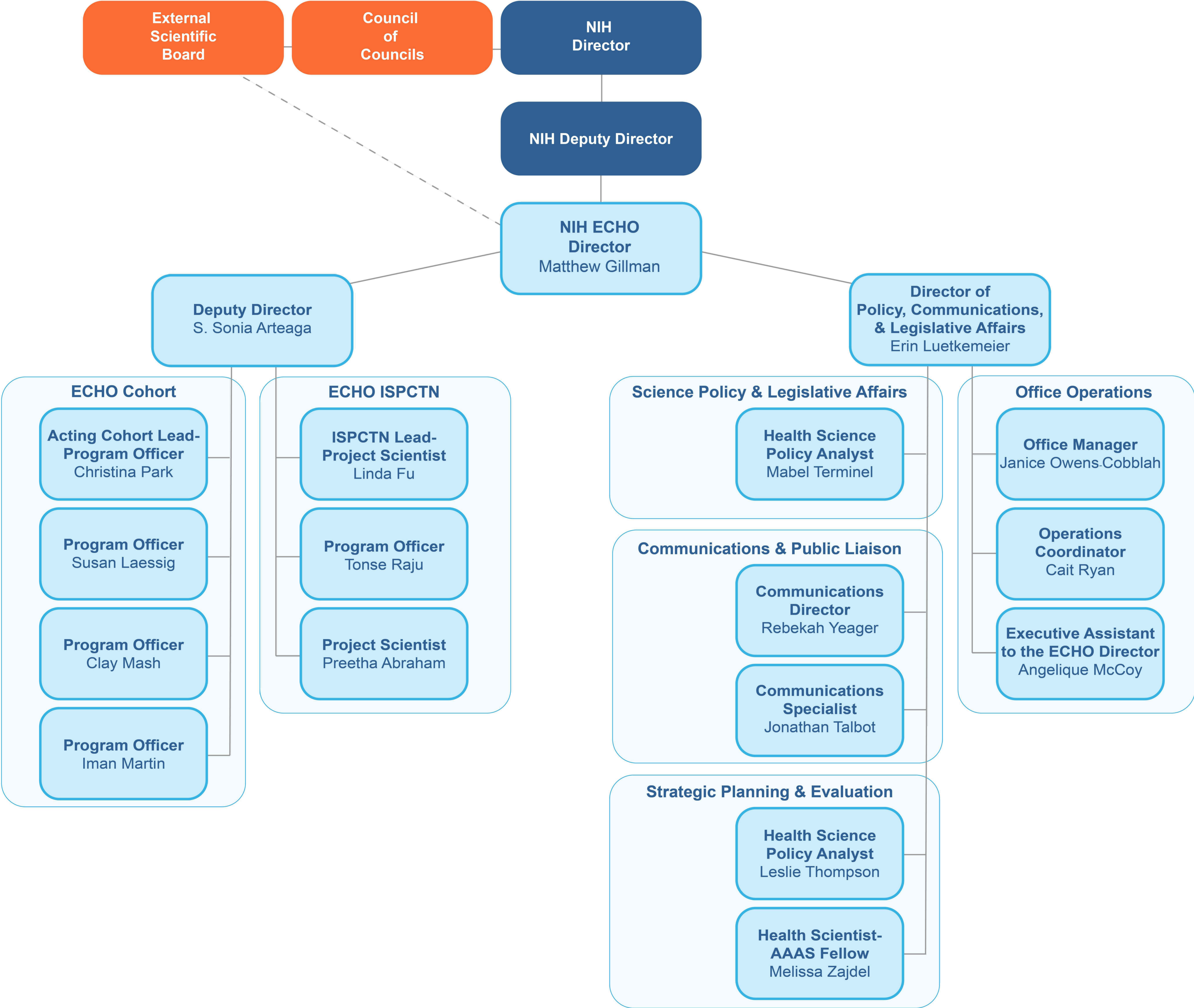


# ECHO PROGRAM OFFICE ORGANIZATION



**External Scientific Board**

**Council of Councils**

**NIH Director**

**NIH Deputy Director**

**NIH ECHO Director**  
Matthew Gillman

**Deputy Director**  
S. Sonia Arteaga

**Director of Policy, Communications, & Legislative Affairs**  
Erin Luetkemeier

**ECHO Cohort**

- Acting Cohort Lead-Program Officer**  
Christina Park
- Program Officer**  
Susan Laessig
- Program Officer**  
Clay Mash
- Program Officer**  
Iman Martin

**ECHO ISPCTN**

- ISPCTN Lead-Project Scientist**  
Linda Fu
- Program Officer**  
Tonse Raju
- Project Scientist**  
Preetha Abraham

**Science Policy & Legislative Affairs**

- Health Science Policy Analyst**  
Mabel Terminel

**Communications & Public Liaison**

- Communications Director**  
Rebekah Yeager
- Communications Specialist**  
Jonathan Talbot

**Strategic Planning & Evaluation**

- Health Science Policy Analyst**  
Leslie Thompson
- Health Scientist-AAAS Fellow**  
Melissa Zajdel

**Office Operations**

- Office Manager**  
Janice Owens-Cobblah
- Operations Coordinator**  
Cait Ryan
- Executive Assistant to the ECHO Director**  
Angelique McCoy