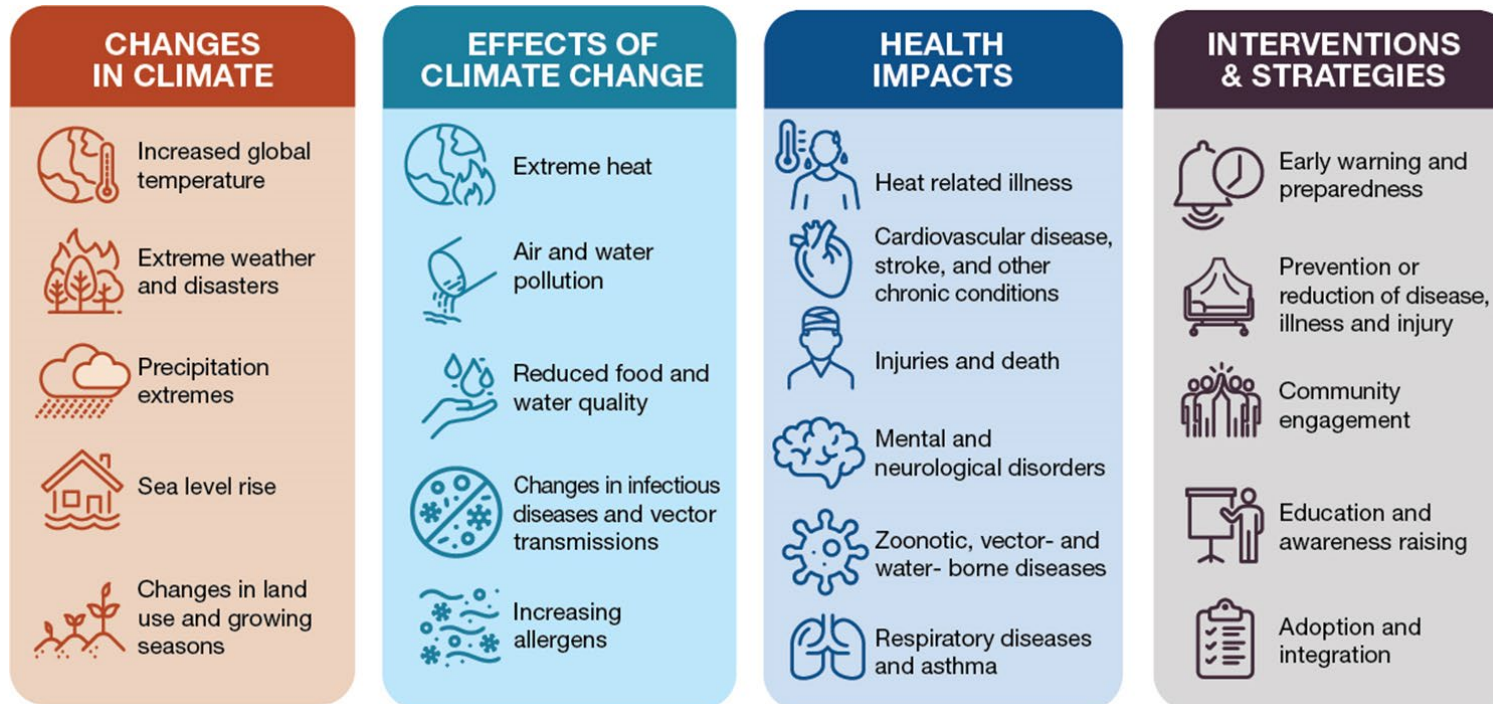




Athawit Ketsak / Shutterstock.com



NIH Climate and Health Scholars Program



Adriana Costero- Saint Denis, NIAID, CH Scholars Program Director & Gwen Collman, CH Scholars Program Senior Advisor *presenting* June 28, 2023



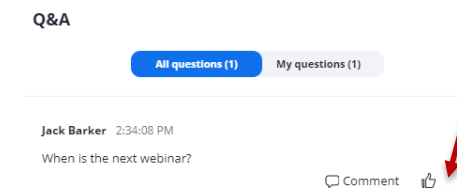
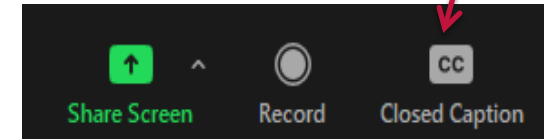
Climate and Health Scholars Information Session

- **Agenda**

- Background of NIH Wide Climate Change and Health Initiative
- Purpose of the Scholars Program & Application Details
- Frequently Asked Questions
- Questions and Answers

- **Reminders**

- Today's webinar WILL Be recorded & posted with FAQ
<https://www.nih.gov/climateandhealth>
- Closed Captioning is available today
- Please submit questions via Q&A
- Use 'thumbs up' to indicate interest in a question





Calls to Action: Climate Change, Health, and Research

THE LANCET

COP26 SPECIAL REPORT ON CLIMATE CHANGE AND HEALTH

CLIMATE HEALTH

Recommendations
Health and

2021

"Leaders of the world have an urgent duty to deliver a future of improved health, economic and environmental sustainability only if the world as a whole is no person is left behind."



A Review by The Lancet

CLIMATE

Climate Change Is The Greatest Threat To Public Health, Top Medical Journals Warn

September 7, 2021 5:01 AM ET
Heard on Morning Edition

Accelerating climate action: the role of health professionals

Both individual action and promotion of systemic change are essential
Juliet Dobson,¹ Sophie Cook,² Howard Frumkin,² Andy Haines,³ Kamran Abbasi¹

Despite years of aspirational promises from governments and leaders, we have acted too slowly on the climate emergency. Time is running out to reverse, or even halt, the damage done by humanity to our planet.

Climate change is affecting health now, and the effects will increase greatly in the future depending on the actions we take.¹ Tipping points, such as ice sheet collapse or methane emissions from melting of the Arctic tundra, coral reef die offs, and alterations of oceanic currents, might be closer than we thought, leading to irreversible damage to biophysical systems leading to irreversible damage to human wellbeing. The Intergovernmental Panel on Climate Change indicates that late greenhouse gas emissions will increase the risk of global warming and sea level rise.

As respected community members, health professionals can introduce the climate emergency into conversations, share knowledge, and inform debate.¹² Doing something tangible can give us hope and purpose, provide relief from the growing problem of climate anxiety,¹³ make us feel part of a collective effort, and help us move on to the challenges that lie ahead.

As respected community members, health professionals can introduce the climate emergency into conversations, share knowledge, and inform debate.¹² Doing something tangible can give us hope and purpose, provide relief from the growing problem of climate anxiety,¹³ make us feel part of a collective effort, and help us move on to the challenges that lie ahead.

America is becoming hotter, and more dangerous

By Anna Phillips, Brady Dennis, Jason Samenow, John Muyskens and Naema Ahmed

July 2, 2022 at 11:16 a.m. EDT



The NEW ENGLAND JOURNAL of MEDICINE

EDITORIAL

Call for Emergency Action to Limit Global Temperature Increases, Restore Biodiversity, and Protect Health

Perspective

Decarbonizing the U.S. Health Sector — A Call to Action

Victor J. Dzau, M.D., Rachel Levine, M.D., George Barrett, M.B.A., and Andrew Witty, B.A.

Article

Metrics

References

THE UNITED NATIONS GENERAL ASSEMBLY IN SEPTEMBER 2021 WILL BRING COUNTRIES together at a critical time for marshalling collective action to tackle the global environmental crisis. They will meet again at the biodiversity summit in Kunming, China, and at the climate conference (COP26) in Glasgow, United Kingdom. Ahead of these meetings, we call for urgent action to keep average global temperatures from rising more than 1.5°C above pre-industrial levels to protect health.

Despite rain, out-of-control wildfire continues to burn in California

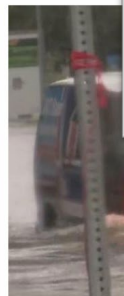
Published: Aug. 02, 2022, 12:21 p.m.

is "like tobacco smoke without the nicotine," one of the ways to keep yourself — and your family — safe is to avoid it. There are some ways to keep yourself — and your family — safe.

CNN US Crime

Severity of flooding prompts call for help

By Elizabeth Wolfe and
Updated 10:14 PM ET





Climate Change Affects Us Unequally- Advancing Health Equity



Under-served populations with health disparities

(Some communities of color; Low-income populations; Low-educational attainment groups; Immigrant groups; Indigenous populations)



Vulnerability by life stage

(Fetal/pre-natal, infants, young children, pregnant women, older adults)



Exposed workers

(e.g., farmers, construction workers)



Vulnerability associated with chronic medical conditions

(e.g., diabetes, asthma, cardiorespiratory diseases, psychiatric diseases)



Persons with disabilities

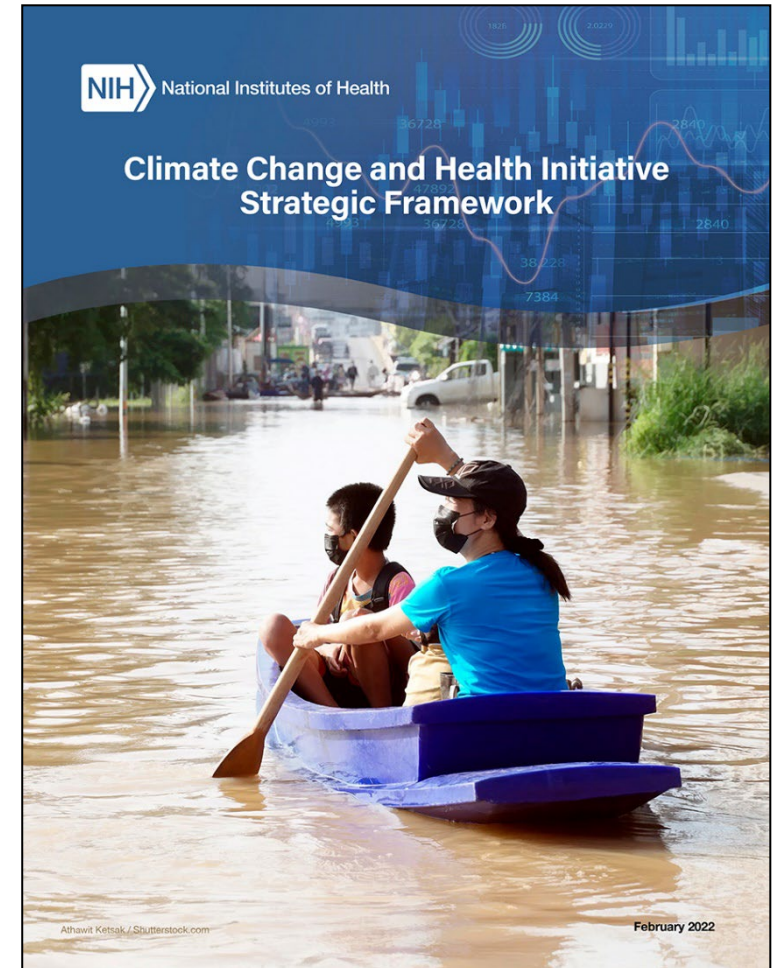


Populations in Low- and Middle-Income Countries

(Higher rates of existing diseases, malnutrition, and extreme poverty)

NIH Climate Change and Health Initiative Strategic Framework

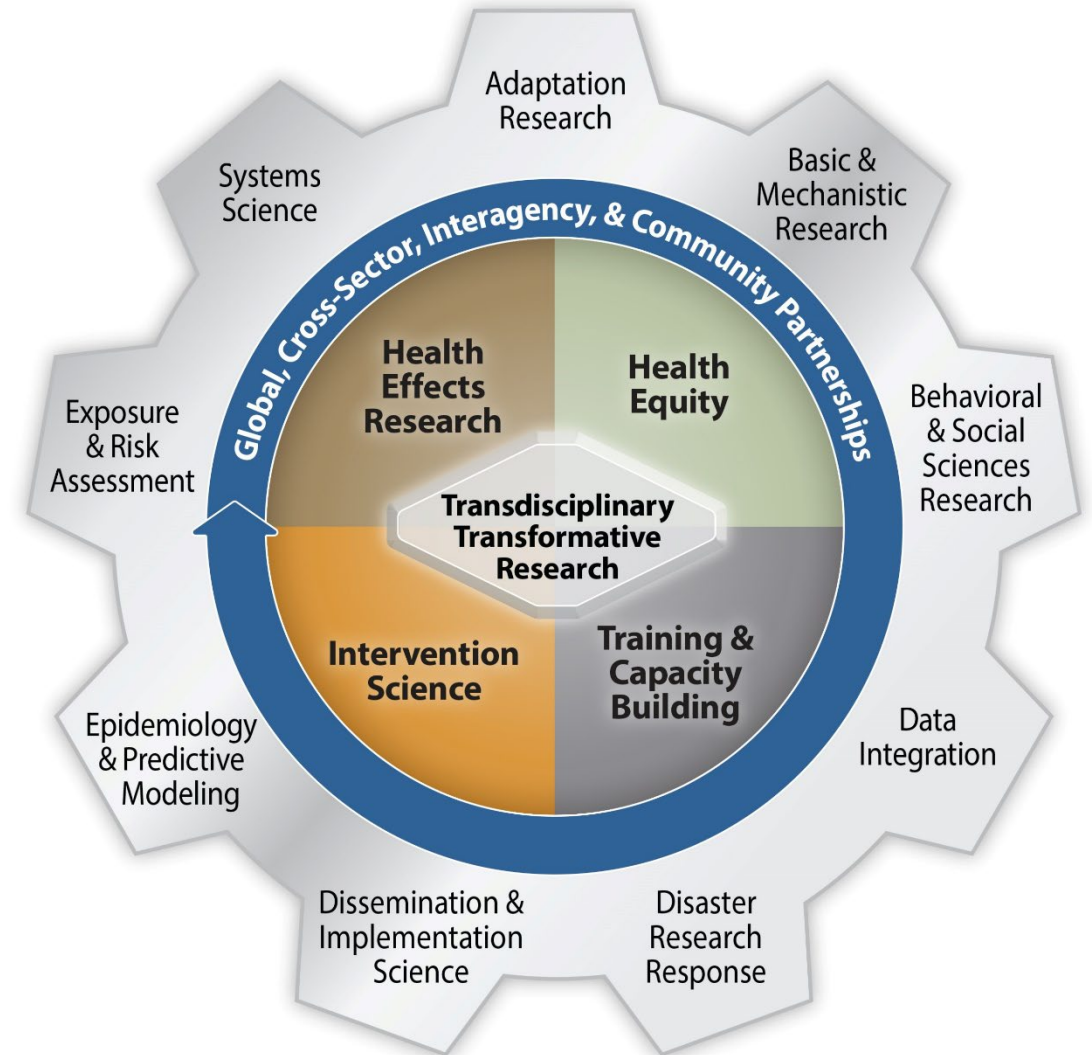
- The NIH Climate Change and Health Initiative is an urgent, cross-cutting NIH effort to reduce health threats from climate change across the lifespan and build health resilience in individuals, communities, and nations around the world, especially among those at highest risk.
- The NIH Climate Change and Health Initiative Strategic Framework provides the initial planning of how the NIH community will address climate change and health.





The NIH CCHI Strategic Framework Guides Future Research to be Funded

- Outlines four core elements
 - Health Effects Research
 - Health Equity
 - Intervention Science
 - Training & Capacity Building
- Focused on 9 Areas of Science
- Goal is to reduce health threats from climate change across the lifespan and build resilience

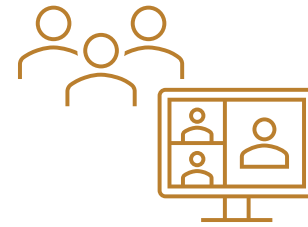


Goals of the NIH Climate and Health Scholars Program

- **Bring scientists with expertise in climate and health research from outside of US Government to NIH**
- Share their knowledge, methods and approaches to relevant topics with NIH staff
- Promote intellectual exchange of research findings, ideas, and resources to inform NIH about current work
- **Build capacity and climate and health understanding at NIH** across the domains of the Strategic Framework cog diagram
- This program is not meant to be a post-doctoral training program

Eligibility Criteria

- U.S. or international scientists from the academic, non-profit, or private sectors.
 - Federal employees and past CH Scholars not eligible.
- Ph.D. or M.D. or equivalent
- Candidates need not have an NIH funding record.
- This program is not open to students & is not a training or Post-Doc training program
 - Post-Docs may be eligible **IF** there is a strong climate record and late in the post doc process
- Should have a strong publication record in climate science or climate and health sciences
- Demonstration of leadership in climate efforts should be reflected in the application



Examples of Scholar Activities

NIH Wide Activities

- Present their research to many audiences across NIH
- Participate in meeting with the NIH-wide Climate Change and Health Working Group
- Meet with CCH Initiative Executive Committee Directors & the leadership of interested ICs
- Engage with scientists in the Intramural Research Program and Extramural Research Programs across the NIH
- Attend regular calls with the entire CH Scholars Cohort to engage in scientific discussions and activities
- Produce a scientific webinar as part of the NIH Climate Change and Health Seminar Series

Host ICO Activities

- Work on state of the science reviews with ICO staff
- Publish white papers on a CCH scientific issue
- Consult with intramural and extramural investigators
- Lead a small training sessions to share details of methodologies of approaches that they have developed as part of their research
- Engage in seminars and webinars to promote the link between climate change and the ICO's mission

This program is not meant to provide time and space for you to conduct your own research at NIH.



Time Commitment



- The 2023-2024 Scholar position can be virtual, on-site, or a hybrid experience.
- Scholars will be expected to dedicate 25% of their time over a 12-month period, and hours/schedule will be determined between the Host ICO and the scholar.
- Funds to support travel and living expenses for on-site engagement can be made available.

Application Components


- 1. Cover Letter
- 2. Biosketch
- 3. Two Letters of Recommendation
- 4. Resumé

Submit your application package to CHScholars@nih.gov by **July 15th**

From your overall application, it should be clear how your expertise would help build climate and health capacity and understanding at the ICO of your choice, as it relates to the ICO's mission.



1. Cover Letter

- A description of how your research and expertise match the mission of one or more of the NIH ICOs and would build their climate and health capacity
 - The details of which host office, laboratory, and/or collaborator(s) you hope to work with, if known
 - A vision statement describing your research focus, and what you would like to accomplish during your time at NIH, as well as an overview of your interest in being a CH Scholar and how your area of expertise would help build climate and health capacity and understanding at one or more of the NIH ICOs, as it relates to the ICO's mission
 - A proposed work schedule (timeline/hours)
 - Your physical location preference (e.g., virtual, on-campus, hybrid, etc.)
 - Any details of financial and research resources you would need to have a successful experience
- 
- A photograph in the top right corner shows two people in a small, blue inflatable boat on a river. One person is wearing a blue shirt and a cap, and the other is wearing a dark shirt. They appear to be paddling or rowing. The water is brownish, and there are some structures visible in the background.

2. Biosketch

- Your full name, position title, and affiliation
- A summary of your education/training (*institution, degree if applicable, completion date, and field of study*)
- A completed list of publications relevant to the field of climate and health
- A list of invited talks or presentations relevant to climate and health, if any
- Your contributions to the science of climate and/or health
- Any research support (*ongoing or past*)
- Any other areas you wish to highlight

This can be like a biosketch used for federal grant applications but does not need to be.

3. Two Reference Letters and 4. Resumé

- **Make sure the following information is included in the reference letters:**
 - Candidate's ability to share knowledge and build capacity
 - Candidate's ability to collaborate across scientific disciplines and expertise areas, as well as engage in new and unfamiliar climate and health topics
 - A short description of their work with the candidate in climate and health related topics
- **Resumé**
 - Any format that highlights your relevant experiences



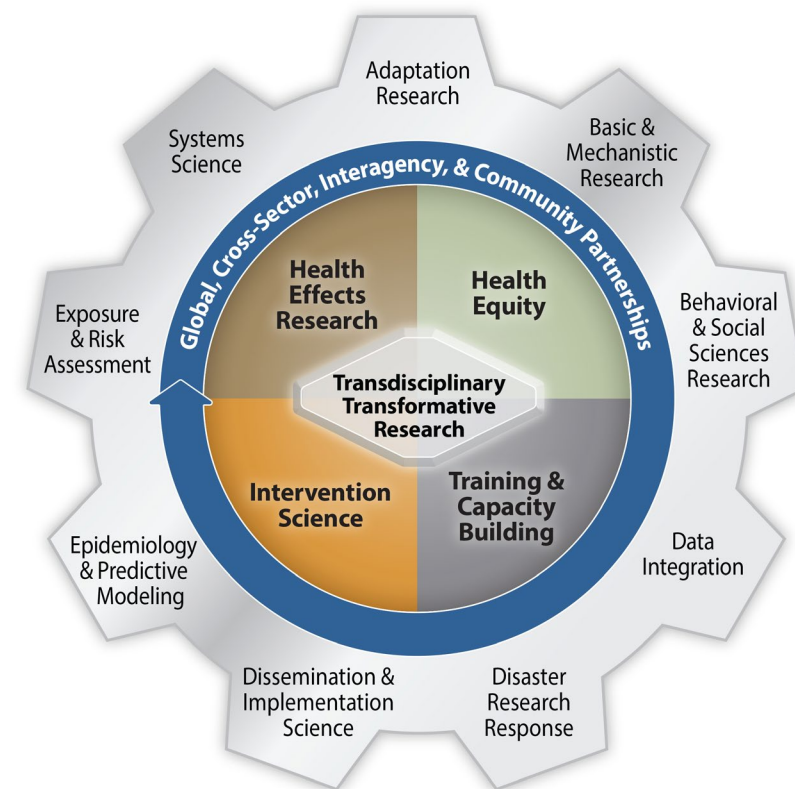
Review Process

- **Step 1- Initial Applications Due & Screening for Eligibility**
 - On July 16th NIH will begin to review applications
 - Applications are reviewed for compliance with eligibility criteria, completeness, and relevance to the mission of participating Institutes, Centers, and Offices (ICOs)
- **Step 2- ‘Match Making & Interviews’**
 - Interviews and discussions with eligible candidates by interested ICOs
 - Dive deeper into customized goals and scheduling
 - August & September 2023
- **Step 3 – Final Selection and Onboarding**
 - First possible start date will be no sooner October 1



Review Criteria

- Proven track record in climate and health
- Alignment with the scientific areas outlined in the cog diagram
- Potential to build capacity across NIH



Participating Host Institutes, Centers, and Offices (ICOs)

- All of Us Research Program (Office of the Director)
- Fogarty International Center (FIC)
- National Institute on Aging (NIA)
- National Institute of Allergy and Infectious Diseases (NIAID)
- National Institute on Minority Health and Health Disparities (NIMHD)
- National Institute of Nursing Research (NINR)
- National Library of Medicine-The National Center for Biotechnology Information (NLM-NCBI)
- National Institute of Environmental Health Sciences (NIEHS)—interest statement coming soon!

You can find the interest statements of these ICOs and what a Scholar could do with each at <https://www.nih.gov/climateandhealth#scholars>

Other NIH Climate Change and Health Activities and Opportunities

- **NIH Climate Change and Health Webinar Series**
 - NIH Institutes and Centers (IC) have joined forces to educate and inform colleagues and the public about the human health implications of climate change. This series will present webinars from different ICs highlighting work in the field of climate change while promoting transdisciplinary discussion and collaboration in this concerted effort against an extreme threat to health.
 - <https://www.nih.gov/climateandhealth>
- **Exploratory Grants for Climate Change and Health Research Center Development (P20 Clinical Trial Optional)**
 - RFA-ES-23-007 | [Expiration Date: November 08, 2023](#)
 - This program will support the development of an innovative research environment to foster and sustain a transdisciplinary program of fundamental and applied research to explore the complex impacts of climate change on health and to develop action-oriented strategies that protect health and build resiliency at the individual, community, national and global levels.
- **Notice of Special Interest (NOSI): Climate Change and Health**
 - NOT-ES-22-006 | [Expiration Date: May 08, 2025](#)
 - As part of the NIH-wide Climate Change and Health Initiative, this NOSI encourages applications that address the impact of climate change on health and well-being over the life course, including the health implications of climate change in the United States and globally.
- **Other NIH Training Opportunities**
 - <https://researchtraining.nih.gov/>

FAQ- Scholars Resources & Process

- **Which Financial Resources can I ask for?**
 - A stipend may be available on a case-by-case basis and will be arranged in the final stages of the review process between the candidate and NIH.
 - Travel and living expenses for on-site engagement may also be made available and will be assessed on a case-by-case basis depending on the mode of participation
 - Publication fees and conference registration if related to work being done as a NIH CH Scholar.
 - Indicate your needs in your cover letter
- **When will Scholars be chosen and announced?**
 - The earliest start date *could* be October 1st and notifications of acceptance will take place prior to that

FAQ – NIH Grants

- **Can my Scholars workplan include activities in support of my federal grant?**
 - **No**, the goal of this program is not to extend your current work, but to work on projects of mutual interest to you and the host ICO.
- **I have an NIH grant application in review now: am I eligible to be a Scholar?**
 - **Yes**
- **Am I still eligible to submit future NIH grants if I am a Scholar?**
 - **Yes**
- **Can I work on the development of Funding Announcements with ICs?**
 - **No**, you will not be able to participate in these discussions or write FOAs.



FAQ Recap: Am I Eligible?

- Ph.D. or M.D. or equivalent
- U.S. or international scientists from the academic, non-profit, or private sectors
 - U.S. Government Federal employees not eligible.
- Candidates need not have an NIH funding record.
- Past CH Scholars are *not* eligible.
- This program is *not* open to students & is not a Post-Doc training program
 - Post-Docs may be eligible *IF* there is a strong climate record and late in the post doc process
 - Other training opportunities can be found at <https://researchtraining.nih.gov/>

Please ask your questions in the Q&A box

Q&A



All questions (1)

My questions (1)

Jack Barker 2:34:08 PM

When is the next webinar?

 Comment





National Institutes of Health

Athawit Ketsak / Shutterstock.com

Thank you for your participation

Adriana Costero- Saint Denis & Gwen Collman

On behalf of the NIH Climate and Health Scholars Program

CHScholars@nih.gov

<https://www.nih.gov/climateandhealth>

<https://www.nih.gov/climateandhealth#scholars>



Eligibility (continued)

- Encourage applicants from Minority Serving Institutions, Community-Based organizations, and LMICs
- NIH is looking for established researchers who have solid research experience in climate and/or health science to help NIH build capacity. NIH encourages applications from researchers with diverse backgrounds and experiences.
- There are a few researchers across the NIH who have specific expertise in climate and health, but there are many staff members who are looking to learn more. NIH is looking to expand its knowledge and work in this area.



More Details

- Climate and Health (CH) Scholars will be hosted by an NIH home Institute, Center, or Office (ICO).
- The Scholars and their hosts will develop a customized workplan that meets the needs and goals of the Host ICO
- During their time at NIH, the Scholar will meet with individuals and groups of NIH staff at their Host ICO and across NIH to discuss one or more areas of a diverse array of CCH research, training, and other relevant activities.
- There may be opportunities for individual or group research collaborations to develop between the Scholar and NIH scientists or to develop collaborations with PIs, intramural researchers, or other CH Scholars.
- *This program is not meant to provide time and space for you to conduct your own research at NIH.*

Climate and Health Scholars Program

Scholar Activities

- **Host ICO Activities may include** Participating in workshop and program meetings, developing research projects, providing trainings on CCH topics, and publishing white papers on CCH scientific issues
- **NIH-Wide Activities may include** Engaging with the NIH Climate Change and Health Working Group, presenting scientific lectures on topics in their expertise area, and collaborating across ICOs on research projects
- *This program is not meant to provide time and space for you to conduct your own research at NIH.*