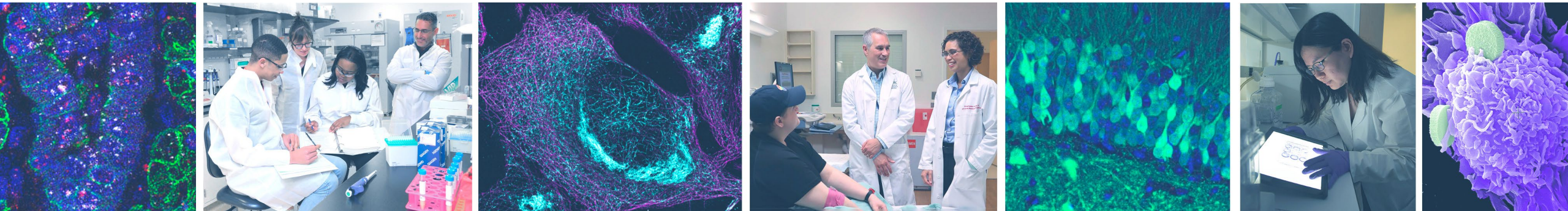


NIH Director's Welcome, Overview of NIH, and SMRB Charge

Scientific Management Review Board
November 12, 2024



Monica M. Bertagnoli, MD
Director, National Institutes of Health



Topics

- Mission
- Overview of NIH
- The Health of the U.S. Population
- Two Priorities
- SMRB Charge

Turning Discovery into Health...*for All*



National Institutes
of Health

NIH supports:

- **Basic research**...to fuel progress
- **Translational research**...to move basic discoveries forward
- **Clinical research**...to turn discoveries into prevention, treatments, and cures
- A **creative and diverse workforce**...since people are our most important resource
- A **balanced research portfolio**...to ensure high return on investment for U.S. taxpayers



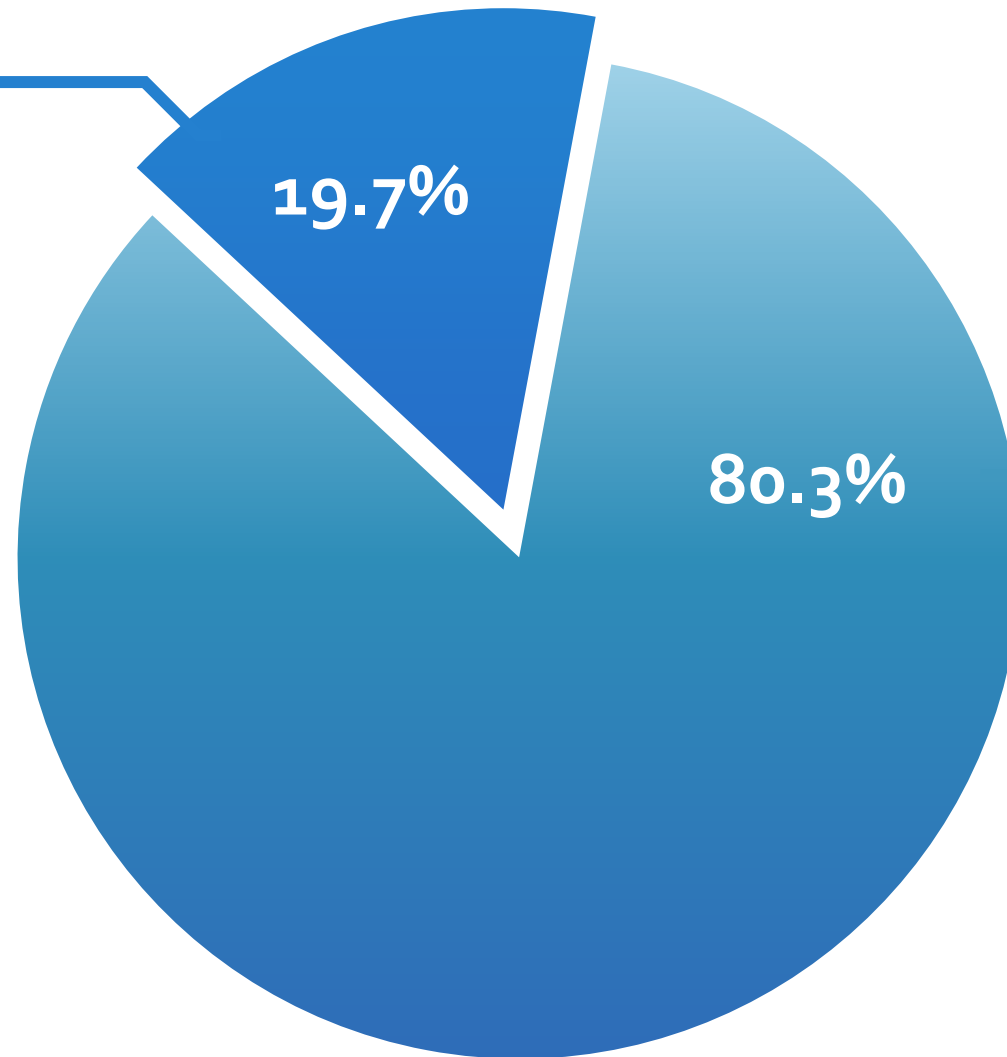
Our work is not finished when we deliver scientific discoveries, our work is finished when all people are living long and healthy lives.



NIH FY 2024 Budget: \$47.4 Billion

Spending at NIH

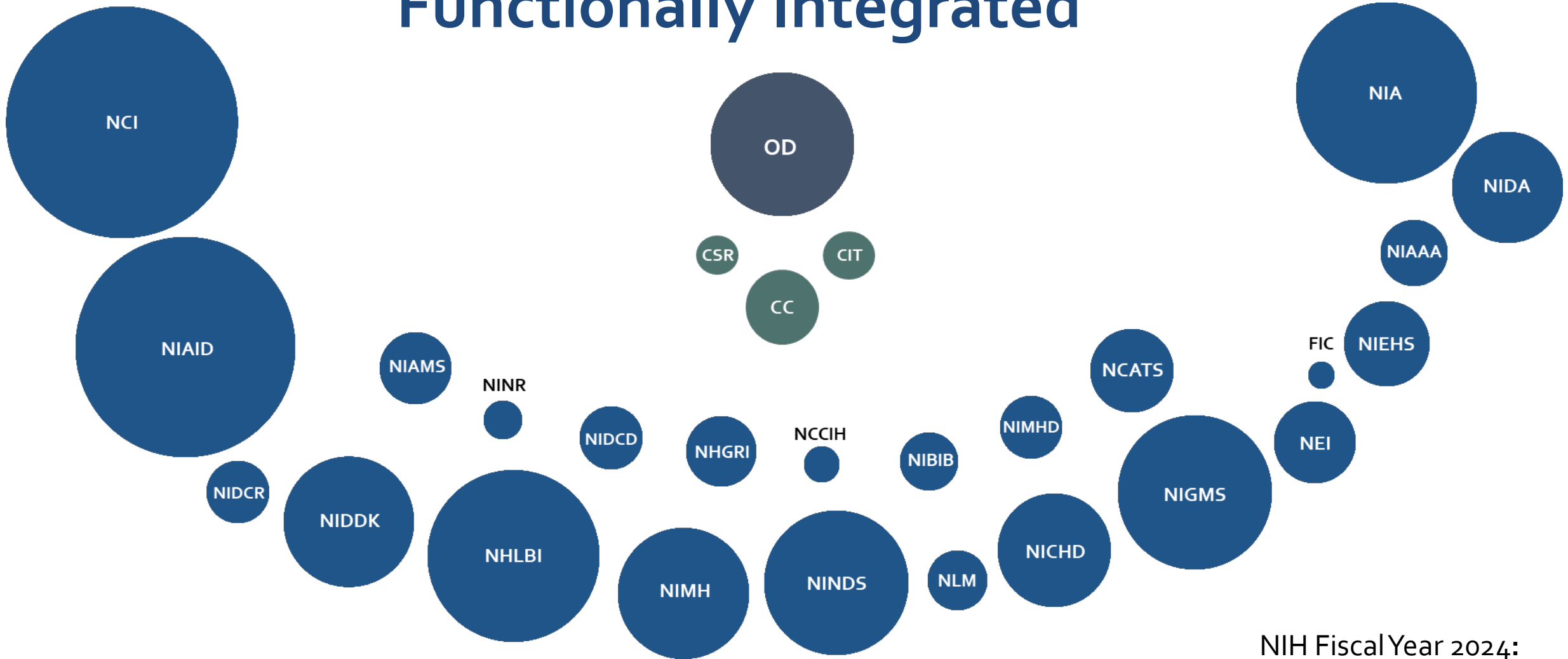
- Projects conducted by NIH scientists
- Research management and support
- Other (administrative, construction, maintenance, operational costs)



Spending outside NIH

- Research project grants at universities, medical schools
- Research centers
- Other research grants
- Research training
- R&D contracts

NIH: Legally Decentralized but Functionally Integrated



Integrated Policies and Infrastructure

NIH Fiscal Year 2024:
~\$47.4 Billion

Office of the Director (OD)

Division of Program
Coordination,
Planning and
Strategic Initiatives

Office of
Extramural
Research

Office of
Intramural
Research

All of Us
Research Program

Immediate Office of
the Director

Office of
Management

Office of Science
Policy

Office of
Communications
and Public Liaison

Office of Equity,
Diversity and
Inclusion

Office of
Legislative Policy
and Analysis

Executive Office

Office of the
Ombudsman

NIH Ethics Office

Office of the Chief
Information Officer

Division of Program Coordination, Planning, and Strategic Initiatives (DPCPSI)

Office of AIDS
Research (OAR)

Office of
Behavioral and
Social Sciences
Research (OBSSR)

Office of Data
Science Strategy
(ODSS)

Office of Dietary
Supplements
(ODS)

Office of Disease
Prevention (ODP)

Office of
Evaluation,
Performance, and
Reporting (OEPR)

Office of Nutrition
Research (ONR)

Office of Portfolio
Analysis (OPA)

Office of Research
Infrastructure
Programs (ORIP)

Office of Research
on Women's Health
(ORWH)

Office of Strategic
Coordination (OSC)

Sexual & Gender
Minority Research
Office (SGMRO)

Tribal Health
Research Office
(THRO)

Office of
Administrative
Management
(OAM)

NIH Common Fund

- Multiple NIH Institutes and Centers collaborate in innovative research addressing high priority challenges for the scientific community and the NIH as a whole

**Regenerative
Medicine
Program:**
NCATS, NHLBI, NEI

**Illuminating the
Druggable
Genome:**
NCATS, NIDDK

**Extracellular RNA
Communication:**
NCI, NCATS, NIEHD

**Transformative
High-Resolution
Cryo-EM:**
NIGMS, NEI

**Human
BioMolecular Atlas
Program:**
NHLBI, NIBIB, NCI

**Somatic Cell
Genome Editing:**
NINDS, NCATS, NCI,
NHGRI

**Human Virome
Program:**
NCI, NCCIH

NIH Helping to End Addiction Long-term® Initiative (NIH HEAL Initiative®)

- Collaboration across **18** NIH Institutes and Centers
- Since 2018, **>1,800** projects in all 50 states, including **300+ clinical trials**.
- Clinical trials evaluating:
 - New medications and interventions for opioid use disorder and overdose
 - Non-addictive pain management strategies



INCLUDE (INvestigation of Co-occurring conditions across the Lifespan to Understand Down syndrome)

- Trans-NIH research initiative on critical health and quality-of-life needs for individuals with Down syndrome



NIH Extramural Program By the Numbers



Recruits
29,000 Reviewers



~80,000
Applications of many types
reviewed



~39,000 Grad Students



~52K research project
applications (~11K awards)
in all 50 states and DC



>29,000 Postdocs



>2,700
NIH-Funded Institutions



~350,000 NIH-Supported
Researchers



171
Nobel Prize winners

NIH Clinical Center: Our Unique Hospital



Largest Clinical Research Center in the World

- Only admits patients as part of clinical research
- About 1,600 clinical studies currently in progress
- Doctors can refer patients or patients can self-refer by visiting clinicaltrials.gov or clinicalstudies.info.nih.gov.
- 40 languages translated to support patients, staff and visitors

NIH Intramural Program by the Numbers



2971 Projects
from 24 NIH ICs



1,117 Principal
investigators



2,181
Postdocs



2,053
Predocs &
Postbacs



188 Boards of
Scientific
Counselors
Members

Health care system performance rankings

Comparing 10 Nations

United States

Overall Rankings **10th**

Access to care **10th**

Care process **2nd**

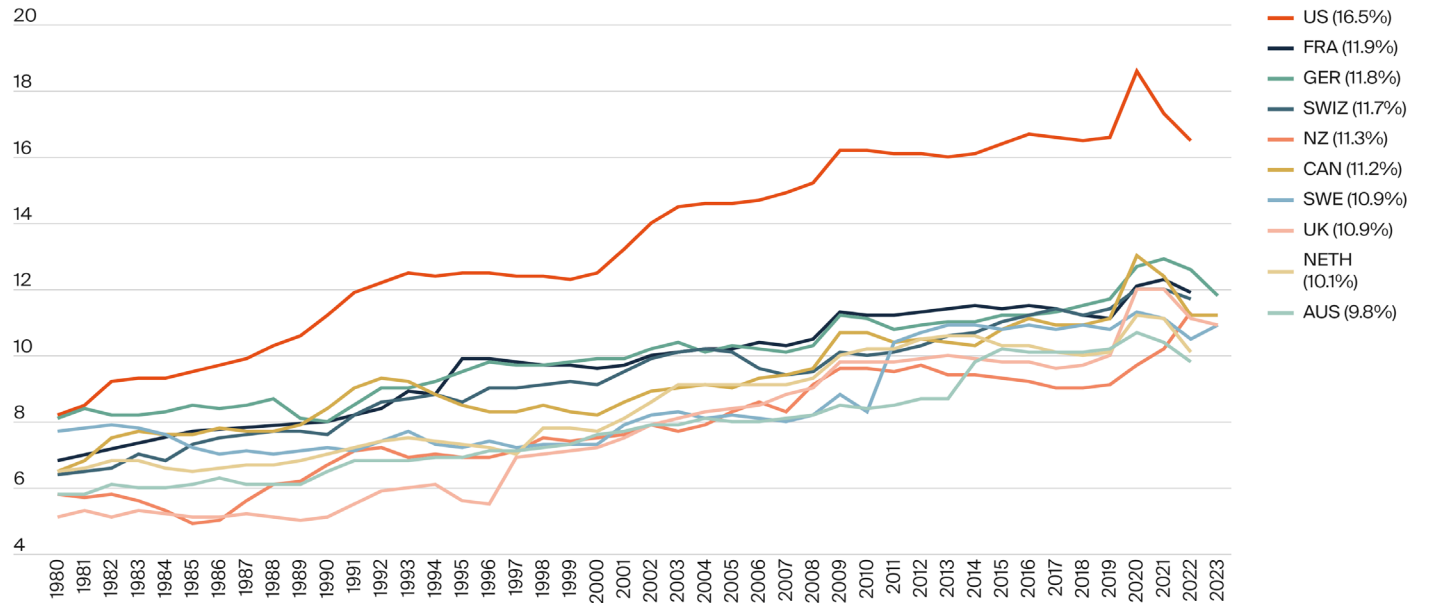
Admin Efficiency **9th**

Equity **9th**

Health Outcomes **10th**

Health Care Spending as a Percentage of GDP 1980–2023

Percent (%) of GDP



Data: OECD Health Data, July 2024. David Blumenthal et al., *Mirror, Mirror 2024: A Portrait of the Failing U.S. Health System — Comparing Performance in 10 Nations*

Estimated Life Expectancy at Birth

Latino

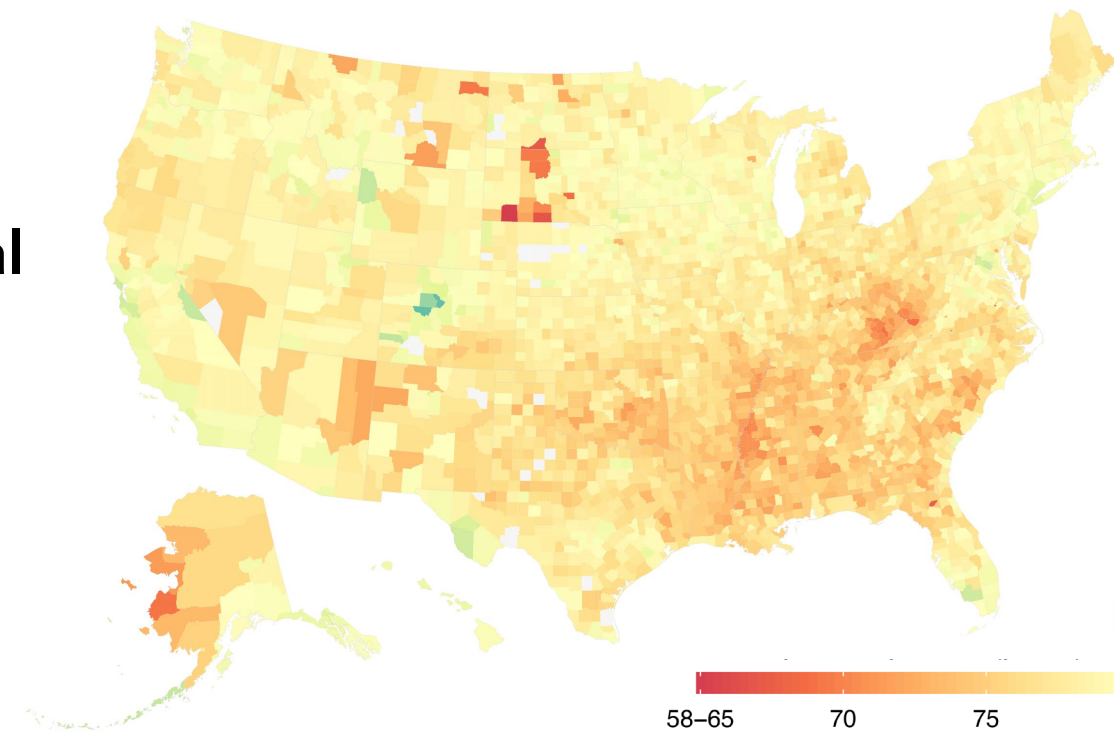
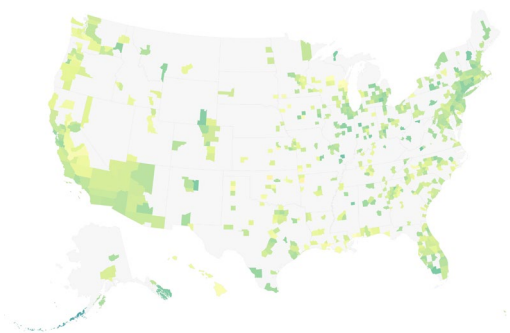
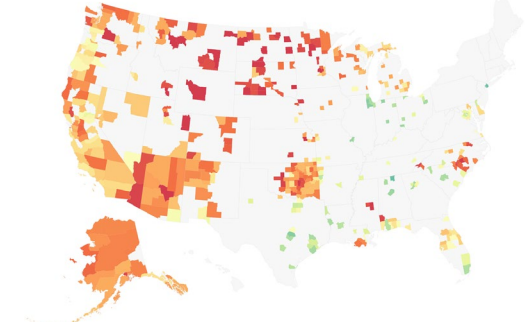
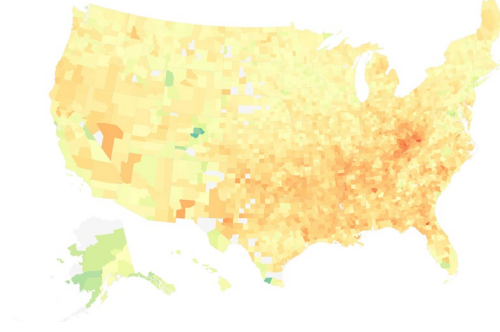
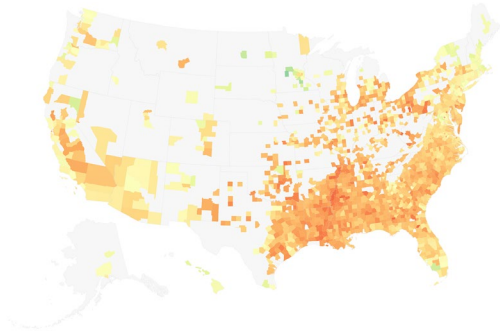
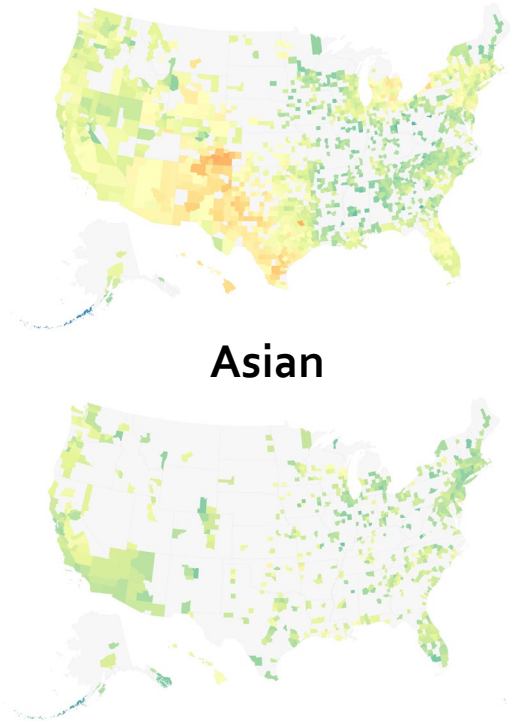
Black

White

AI/AN

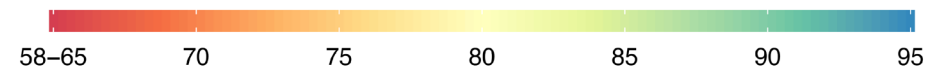
Asian

Total



US County-Level Health Disparities: 2000–2019,
Institute for Health Metrics and Evaluation,
University of Washington

Life expectancy - 2019



Communities Advancing Research Equity for Health **CARE for Health™**

Integrate
research into
the clinical care
environment

Engender trust in
science by
addressing
community needs

Achieve longitudinal collection of clinical
data to address health across the lifespan

Conduct research addressing
issues important to diverse
communities, particularly
those underrepresented in
biomedical research

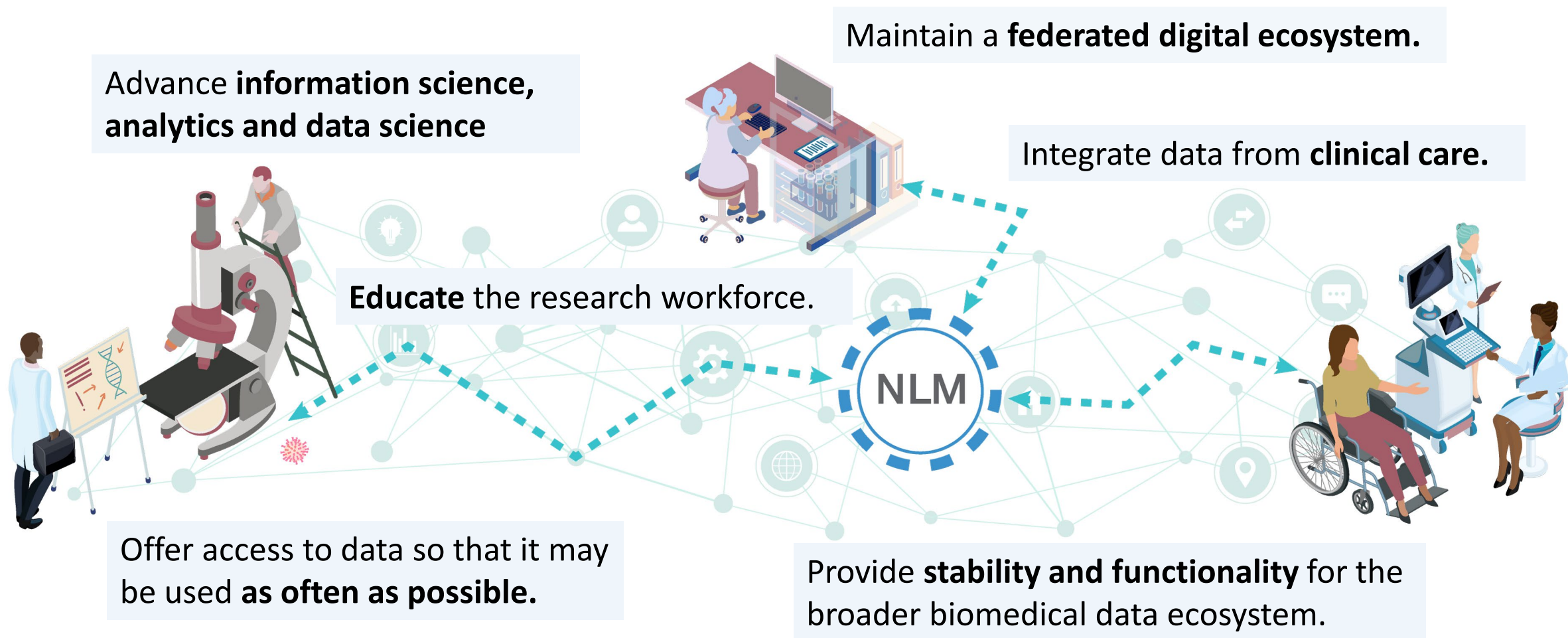
Reduce burden on providers
using innovative data
collection methods

Increase adherence to
evidence-based care



Community-based primary care practices

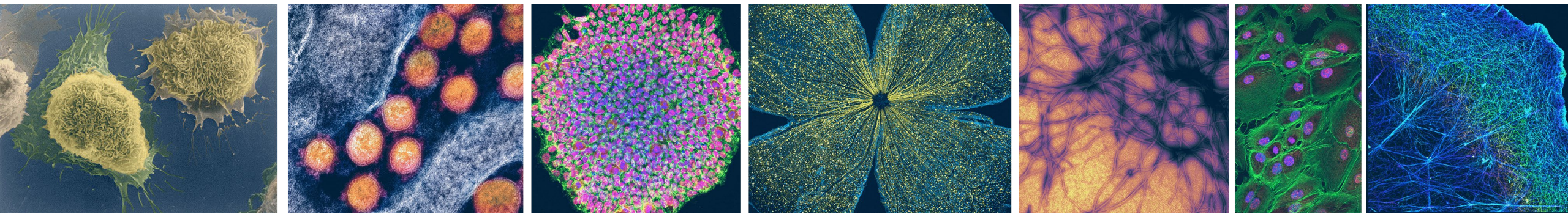
National Library of Medicine: Envisioning A Platform for Biomedical Discovery and Data-Powered Health



Initial Charge: SMRB Restart

The NIH requests that SMRB **evaluate the current structure of NIH and propose changes that will enhance the ability of the Agency to fulfill its mission.** To address this charge, the SMRB should:

1. Reexamine the 2010 SMRB report, *Deliberating Organizational Change and Effectiveness*. Should we update the **criteria for determining when organizational change should be contemplated?**
2. **Consider recent proposals** from the House Energy and Commerce Committee and Senate HELP Committee
3. **Reevaluate existing guiding principles** for the process of deliberating proposed organizational changes, and
4. Based upon these updated criteria and principles, **provide recommendations** of any organizational change that will enhance the ability of the Agency to fulfill its mission.



NIH

Turning Discovery Into Health

